

# Berrybank Stage 2 Wind Farm

**Berrybank 2 Asset Pty Ltd**

**February 2021 Newsletter**

**Phone:** 0400 403 282

**E-mail:** [info@globalpower-generation.com.au](mailto:info@globalpower-generation.com.au)

**Website:** [http:// globalpower-generation.com.au/](http://globalpower-generation.com.au/)

**Mail:** Berrybank 2 Asset Pty Ltd, Suite 4, Level 3, 24 Marcus  
Clarke Street, Canberra ACT 2600



# Berrybank Stage 2 Wind Farm

## Community Update

**Community Engagement Committee:** At the February meeting of the Berrybank 1 CEC a motion was put forward to the committee by GPG to accept the applications received from the community to join the Berrybank Stage 2 Wind Farm Community Engagement Committee; this motion was moved and accepted by the committee. GPG would like to welcome Robyn Alexander, Morgan Rumler, Kevin Molesworth, and Jane & Malcolm Cooper to the Berrybank Stage 2 Community Engagement Committee, who will be joining Brenda & Peter Rumler, Moira Turner and Brendan Keating from the Berrybank Stage 1 Community Engagement Committee along with representatives from Global Power Generation, Golden Plains Shire, Corangamite Shire, Vestas and TransGrid.

## Construction Update

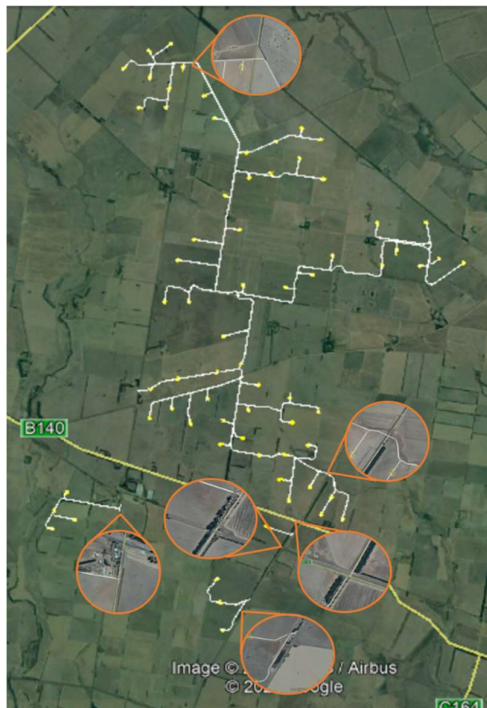
In preparation for the kickoff of construction, our contractors have been busy on-site working with our landowners on pegging out the alignments of the almost 20km of internal access tracks and the hardstand and foundation locations of the 26 Wind Turbine Generators to be installed for Stage 2.

The construction of Stage 2 will be beginning in the north western section of the wind farm. During the first weeks of construction local residents may see some minor traffic delays in the area, as our contractors will be performing some road upgrades at our northern crossing point from east to west of Berrybank Wallinduc Road, approx. 950m south of Urches Road. We will endeavor to keep the disruption to local traffic to a minimum.

During the construction of Stage 2 of the Wind Farm, our contractors will also be performing upgrades to other local roads surrounding the wind farm; these include:

- A road crossing on Foxhow Rokewood Road approx. 1.2km north of Hamilton Hwy
- Upgrade to intersection of Doyles Road and Hamilton Hwy
- Major upgrade and widening of Rail Intersection on Doyles Road
- Upgrades to Doyles Road south of the Railway Line
- Upgrades on Foxhow Berrybank Road approx. 330m south of the Railway Line.

GPG and our contractors will provide notice to all local residents surrounding these areas prior to commencement of works for these upgrades.



## Berrybank Stage 2 Wind Farm

Berrybank 2 Asset Pty Ltd  
Phone: 0400 403 282  
E-mail: [info@globalpower-generation.com.au](mailto:info@globalpower-generation.com.au)  
Website: <http://globalpower-generation.com.au/>  
Mail: Berrybank 2 Asset Pty Ltd, Suite 4, Level 3, 24 Marcus Clarke Street, Canberra ACT 2600